

CLOROX[®]PRO

Product Reference Guide

Clorox[®] Bleach
Cream Cleanser





Clorox® Bleach Cream Cleanser

- ▶ **Bleach-based cleaner removes tough stains including coffee, grease, soap scum, mold and blood from hard nonporous surfaces**
- ▶ **Contains scrubbing beads that penetrate dirt quickly**
- ▶ **Slightly blue color makes it easy to see where the cleaner has been applied**



Clorox® Bleach Cream Cleanser
32 fl. oz. Pull Top
Item No.: 30613

At a Glance Clorox® Bleach Cream Cleanser

Product Type	Ready-to-use
Cleaning Chemical Type	1-step cleaner (hard surfaces)
pH	~12
Odor	Floral, Bleach
Shelf Life	1 year from the manufactured date on label
Toxicity Signal Word	CAUTION SDS link
HMIS Rating	2-0-0-X
PPE Required	Safety glasses with side-shields and gloves are recommended if splashes are likely to occur



Directions for Use

Step 1: Preparation



1. Gather supplies.



2. Wash hands with soap and water.

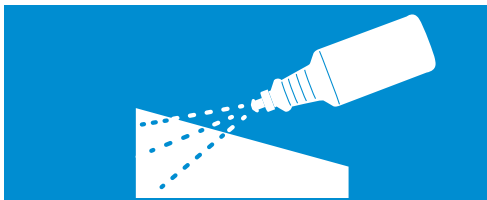


3. Put on PPE required by your facility¹.

1. Safety glasses with side-shields and gloves are recommended if splashes are likely to occur.

Step 2: Application

To clean hard, nonporous surfaces



1. Shake well. Squeeze product directly onto surface or onto a damp sponge or cloth.



2. Clean surface completely.



3. Rinse and wipe clean.

Step 3: Wrap Up



1. Discard disposable supplies; clean and disinfect reusable tools.



2. Store products.



3. Remove PPE.



4. Wash hands with soap and water.

Common Applications



Commercial Kitchen Areas

- ▶ Kitchen Counters
- ▶ Sinks



Restrooms

- ▶ Showers / tubs
- ▶ Bathroom counters
- ▶ Toilets
- ▶ Sinks



Surface Compatibility

This product is safe for use on these surface materials.*



Enamel



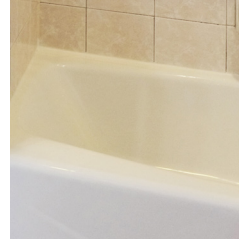
Crystal



Glazed Ceramic/Tile



Laminate



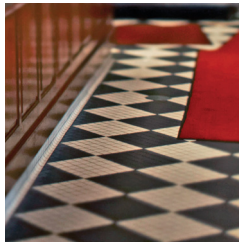
Sealed Fiberglass



Chrome



Glass



Linoleum



Plastic



Porcelain /Glazed
Porcelain



Synthetic Marble



Stainless Steel



Vinyl

Not recommended aluminum, brass, copper, painted surfaces, rubber, silver, wood.

PRO TIP

If you're unsure about compatibility with a certain surface, contact the manufacturer or test it on the surface in an inconspicuous area prior to using it more widely. To prevent residue build up and further reduce the risk of potential surface damage, wipe periodically with a clean damp cloth to remove residue and excess disinfectant.

* Compatibility with equipment and surfaces will vary based on the components and material coatings. Check with the manufacturer for guidance on approved products for disinfection.

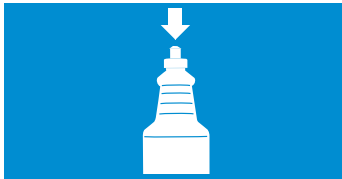




Product Storage & Disposal

STORAGE

Do's



Secure bottle (container tightly closed)



Store in a dry, cool and well-ventilated place



Store at or below eye level for safety precaution

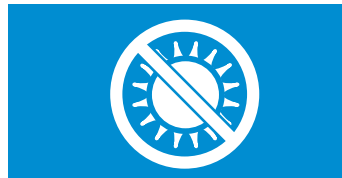
Don'ts



Do not freeze



Do not store in location accessible to children



Keep out of direct sunlight

DISPOSAL

Chemical

Do's



Dispose of at an approved waste disposal facility



Contact your local environmental, health or solid waste agency for proper disposal of the chemical

Don'ts



Pour it down the drain or toilet, on the ground, into storm sewers



Dispose with regular trash

Container

Do's



Recycle plastic container

Don'ts



Reuse or refill plastic container

CLOROXPRO



Product Safety

Precaution for safe handling: Handle in accordance with good industrial hygiene and safety practice. Avoid contact with skin, eyes, and clothing. Do not eat, drink or smoke when using this product. Remove and wash contaminated clothing

Most important symptoms and effects: Redness of the skin. May cause redness and tearing of the eyes

First Aid:

**Eye contact:**

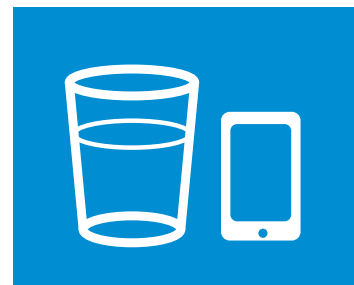
- ▶ Hold eye open and rinse gently with water for 15-20 min.
- ▶ If present, remove contact lenses after the first 5 min. of rinsing, then continue rinsing eye

**Skin contact:** not irritating

- ▶ Wash skin with soap and water

**Inhalation:**

- ▶ Move to a place with fresh air

**Ingestion:**

- ▶ Do NOT induce vomiting.
- ▶ Clean mouth with water and drink plenty of water.
- ▶ Never give anything by mouth to an unconscious person

If irritation or other symptoms such as breathing problem persists, call a poison control center or doctor for treatment advice.

National Fire Protection Association (NFPA) Ratings:

Health Hazard: 2
Flammability: 0
Instability: 0
Physical and Chemical Hazards: None

Hazardous Material Identification System (HMIS) Ratings:

Health Hazard: 2*
Flammability: 0
Physical Hazard: 0
Personal Protection: None

Questions: Call 1-800-492-9729

SDS: Much of this information and more can be found on the SDS. Make sure to have a printed product SDS within 10 min of travel time, so it is easily accessible.

Click [here](#) for a link to the product SDS.

*Indicates a chronic health hazard

