

CLOROXPRO

Product Reference Guide

Pine-Sol® Scented
All Purpose Cleaner
Sparkling Wave®



Pine-Sol® All Purpose Cleaner

- ▶ **Dilutable all-purpose cleaner that can be used on hard, nonporous surfaces**
- ▶ **Cleans and deodorizes with a distinctive scent**
- ▶ **Cuts through tough grease and grime, without leaving a sticky residue**

At a Glance Pine-Sol® All Purpose Cleaner	
Product Type	Concentrate
Cleaning Chemical Type	<ul style="list-style-type: none"> ▶ Cleaner (hard surfaces) ▶ Deodorizer (hard surfaces)
pH	~12.5
Odor	Floral, musk, woody
Shelf Life	12 months from the manufactured date on label
Toxicity Signal Word	Caution SDS link
HMIS Rating	2-O-O-B
PPE Required	Safety glasses recommended if splashes are likely to occur



Pine-Sol®
All Purpose Cleaner
144 fl. oz. Bottle
Item No.: 97434



Directions for Use

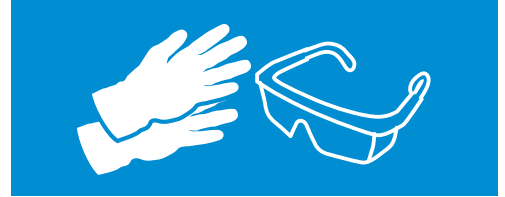
Step 1: Preparation



1. Gather supplies.



2. Wash hands with soap and water.



3. Put on gloves and safety glasses.

Step 2: Application

To clean general areas and floors

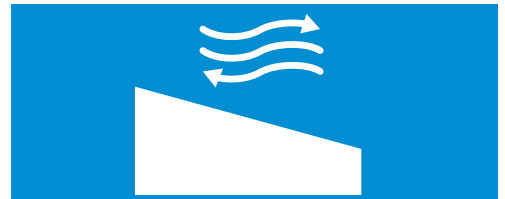


1. Dilute 1/4 cup of solution per gallon of water.*

*For tough jobs, use full strength and rinse immediately



2. Apply solution.



3. Air dry*

*on wood surfaces, do not allow puddles of cleaner to remain

Step 3: Wrap Up



1. Discard disposable supplies; clean and disinfect reusable tools.



2. Store products.



3. Remove PPE.



4. Wash hands with soap and water.



Common Applications



Animal Care

- ▶ Pet areas
- ▶ Plastic dog houses
- ▶ Floors



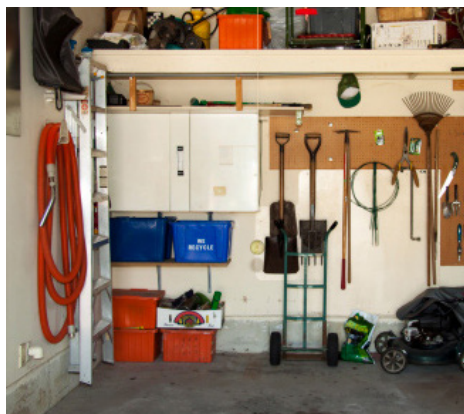
Children's Areas

- ▶ Highchairs (non-food areas)
- ▶ Changing tables
- ▶ Diaper pails
- ▶ Playrooms



Commercial Kitchen Areas

- ▶ Floors
- ▶ Counter tops
- ▶ Appliance exteriors
- ▶ Range hoods



Garages

- ▶ Tools
- ▶ Cabinets
- ▶ Garage floors
- ▶ Garage doors



Restrooms

- ▶ Toilets
- ▶ Sinks
- ▶ Showers
- ▶ Restroom tiles



Offices

- ▶ Floors
- ▶ Tables
- ▶ Cupboards
- ▶ Chairs



Surface Compatibility

This product is safe for use on these surface materials.*



Baked enamel



Bamboo*



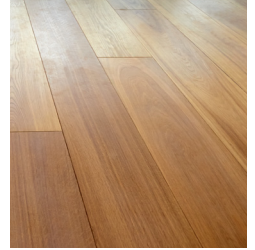
Cement



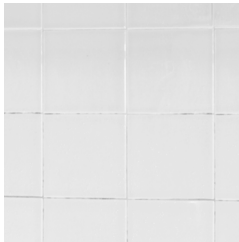
Chrome



Concrete



Engineered woods*



Glazed
Ceramic tiles



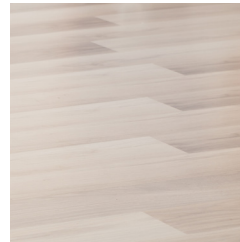
Glazed Porcelain



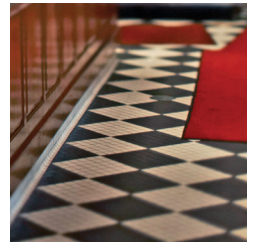
Plastic



Hard vinyl



Laminate



Linoleum



Metal



Sealed Fiberglass



Sealed Granite



Stainless Steel



Vinyl

Not recommended for use on aluminum, brass, chipped enamel, copper, galvanized steel, paper surfaces, porous painted surfaces, sealed and unsealed granite and marble, silver, unsealed stone, unfinished wood.

PRO TIP

If you're unsure about compatibility with a certain surface, contact the manufacturer or test it on the surface in an inconspicuous area prior to using it more widely. To prevent residue buildup and further reduce the risk of potential surface damage, wipe periodically with a clean damp cloth to remove residue and excess disinfectant.

* Finished, painted or sealed wood. Do not use on wood that is unfinished or unsealed.





Product Storage & Disposal

STORAGE

Do's



Secure bottle (container tightly closed)



Store in a dry, cool and well-ventilated place



Store at or below eye level for safety precaution

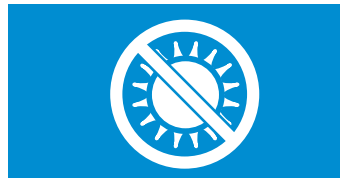
Don'ts



Do not contaminate water, food or feed



Do not store in location accessible to children



Keep out of direct sunlight and heat

DISPOSAL

Chemical

Do's



Dispose of at an approved waste disposal facility



Contact your local environmental, health or solid waste agency for proper disposal of the chemical

Don'ts



Dispose of with regular trash

Container

Do's



Recycle plastic container

Don'ts



Reuse or refill plastic container

CLOROXPRO



Product Safety

Precaution for safe handling: Handle in accordance with good industrial hygiene and safety practice. Avoid contact with eyes, skin or clothing. Do not eat, drink or smoke when using this product.

First Aid:



Eye contact: May cause temporary irritation

- ▶ Hold eye open and rinse gently with water for 15–20 min.
- ▶ If present, remove contact lenses after the first 5 min of rinsing, then continue rinsing eye. Call a poison control center or doctor



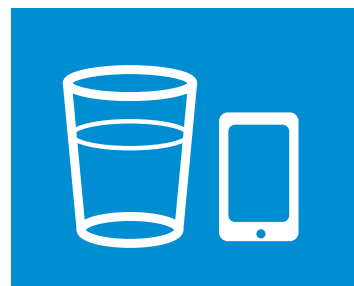
Skin contact:

- ▶ Take off contaminated clothing
- ▶ Rinse skin immediately with plenty of water for 15–20 min. Call a poison control center or doctor



Inhalation: Excessive intentional inhalation may cause respiratory tract irritation

- ▶ Move to a place with fresh air



Ingestion: May cause stomach distress, nausea or vomiting

- ▶ Have person sip a glassful of water if able to swallow. Do not induce vomiting unless told to do so by a poison control center or doctor.

Call a poison control center or doctor immediately for treatment advice. Have the product container or label with you when calling or going for treatment.

National Fire Protection Association (NFPA) Ratings:

Health Hazard: 2
Flammability: 0
Instability: 0
Physical and Chemical Hazards: None

Hazardous Material Identification System (HMIS) Ratings:

Health Hazard: 2
Flammability: 0
Physical Hazard: 0
Personal Protection: B

Questions: Call 1-800-492-9729

SDS: Much of this information and more can be found on the SDS. Make sure to have a printed product SDS within 10 min of travel time, so it is easily accessible. Click [here](#) for a link to the product SDS.

