



HEALTHCARE™

Product Reference Guide

Clorox Healthcare®
Bleach Germicidal
Disinfectant



Clorox Healthcare® Bleach Germicidal Disinfectant

- ▶ **Bleach based cleaner disinfectant deodorizer that kills 51 microorganisms in 3 min. or less**
- ▶ **Ready-to-use formula already diluted at 1:10 meets CDC and OSHA recommendations for 1:10 bleach solutions for disinfecting healthcare surfaces**
- ▶ **Reduces compliance risks and labor costs associated with dilutable disinfectants**



Clorox Healthcare®
Bleach Germicidal Disinfectant
128 oz. Refill
Item No.: 68978

At a Glance Clorox Healthcare® Bleach Germicidal Disinfectants	
EPA Registration No	56392-7 (Dispatch)
Product Type	Ready-to-use
Cleaning Chemical Type	<ul style="list-style-type: none"> ▶ 1-step cleaner disinfectant (hard surfaces) ▶ Deodorizer (hard surfaces)
Active Ingredient	Sodium Hypochlorite (0.65%)
pH	11.8-12.2
Odor	Floral, Bleach
Shelf Life	18 months from the manufactured date on label
Toxicity Signal Word	Caution SDS link
HMIS Rating	0-0-0-A
PPE Required	None



Disinfection Efficacy Claims

Disinfection	Contact Time
BACTERIA	
<i>Acinetobacter baumannii</i> (multidrug-resistant)	1 min
<i>Bordetella pertussis</i>	1 min
<i>Campylobacter jejuni</i>	1 min
<i>Klebsiella pneumoniae</i> (carbapenem-resistant)	1 min
<i>Enterobacter aerogenes</i>	1 min
<i>Enterobacter cloacae</i> (NDM-1)	1 min
<i>Enterococcus hirae</i>	1 min
<i>Escherichia coli</i> ESBL	1 min
<i>Klebsiella pneumoniae</i> ESBL	1 min
<i>Escherichia coli</i> (NDM-1)	1 min
<i>Klebsiella pneumoniae</i>	1 min
<i>Klebsiella pneumoniae</i> (NDM-1)	1 min
<i>Staphylococcus aureus</i> (methicillin-resistant) (MRSA)	1 min
<i>Enterococcus faecium</i> (multidrug-resistant)	1 min
<i>Proteus mirabilis</i>	1 min
<i>Pseudomonas aeruginosa</i>	1 min
<i>Salmonella enterica</i>	1 min
<i>Serratia marcescens</i>	1 min
<i>Staphylococcus aureus</i>	1 min
<i>Staphylococcus epidermidis</i> (CoNS)	1 min
<i>Streptococcus pyogenes</i>	1 min
<i>Stenotrophomonas maltophilia</i>	1 min
<i>Streptococcus pneumoniae</i>	1 min
<i>Enterococcus faecalis</i> (vancomycin-resistant) (VRE)	1 min
<i>Staphylococcus aureus</i> (vancomycin intermediate-resistant) (VISA)	1 min
<i>Staphylococcus aureus</i> (vancomycin-resistant) (VRSA)	1 min
<i>Enterococcus faecium</i> (vancomycin-resistant) (VRE)	1 min

Disinfection	Contact Time
SPORE-FORMING BACTERIUM	
<i>Clostridioides difficile</i> [†]	3 min
FUNGI	
<i>Candida auris</i> (<i>C. auris</i>)	3 min
<i>Candida albicans</i> (<i>C. albicans</i>)	1 min
<i>Trichophyton mentagrophytes</i> (Athlete's Foot Fungus)	1 min
VIRUSES	
Avian Influenza A Virus	1 min
Hepatitis B Virus (HBV)*	1 min
Hepatitis C Virus (HCV)*	1 min
Herpes Simplex Virus type 2 (HSV-2) [†]	1 min
Human Immunodeficiency Virus Type 1 (HIV-1)	1 min
Influenza A Virus	1 min
Influenza B Virus	1 min
Measles Virus	1 min
Middle Eastern Respiratory Syndrome Coronavirus (MERS-CoV)	1 min
SARS-CoV-2 (cause of COVID-19) [†]	1 min
Adenovirus Type 2	1 min
Rotavirus	1 min
Canine Parvovirus	1 min
Enterovirus D68	1 min
Feline Panleukopenia Virus	1 min
Hepatitis A Virus (HAV)	1 min
Norovirus (as Feline Calicivirus)	1 min
Poliovirus Type 1 (Mahoney)	1 min
Rhinovirus	1 min

* Obtained via surrogate.

[†] Tested in the presence of 3-part organic soil load following EPA Guidance for the Efficacy Evaluation of Products with Sporicidal Claims Against *Clostridium difficile* (June 2014). Use as directed on hard, nonporous surfaces. Follow special instructions for cleaning prior to disinfection.



Directions for Use

Step 1: Preparation



1. Gather supplies.



2. Wash hands with soap and water.



3. Put on PPE required by your facility¹.

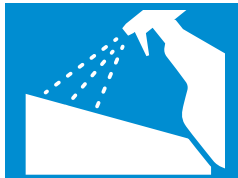
¹ PPE is not required for using this product, so we recommend following your facility's PPE policy.

Step 2: Application

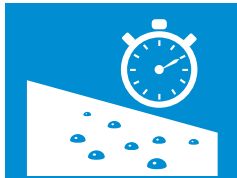
To clean, disinfect and deodorize hard, nonporous surfaces



1. Clean visible soil.



2. Spray disinfectant 6"-8" away from surface.



3. Surface needs to stay wet for the contact time².



4. Wipe with clean, damp cloth (No rinsing required unless used on food-contact surfaces.)

2. contact time by application

APPLICATION	CONTACT TIME
Disinfect	1 min.*
Deodorize	N/A

* *C. difficile* and *Candida auris* have a 3 min. contact time

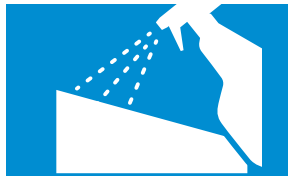
To clean and decontaminate against bloodborne pathogens on surfaces soiled with blood and body fluids



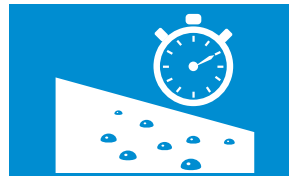
1. Wear disposable impervious gloves, gowns, masks and eye coverings.



2. Thoroughly clean and remove blood and other body fluids from surfaces with a cleaner.



3. Spray disinfectant 6"-8" from surface.



4. Surfaces needs to stay wet for the contact time of 1 min.



5. Dispose infectious material in accordance with local regulations for infectious waste disposal.



HEALTHCARE™



Directions for Use (cont.)

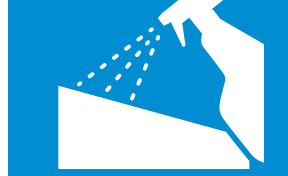
To clean and disinfect against *Clostridioides difficile* spores and *Candida auris*



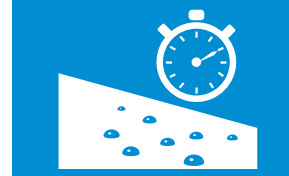
1. Wear appropriate PPE such as gloves, gowns, masks and eye coverings.



2. Thoroughly clean and remove fecal matter from surfaces with a cleaner.



3. Spray disinfectant 6"-8" from surface.



4. Surfaces need to stay wet for 3 min.



5. Dispose soiled cloths.

Pay special attention to high-touch surfaces. To minimize spores from spreading, clean from right to left or left to right for horizontal surfaces and top to bottom for vertical surface. Clean restrooms last.

Step 3: Wrap Up



1. Discard disposable supplies; clean and disinfect reusable tools.



2. Store products.



3. Remove PPE.



4. Wash hands with soap and water.



Common Applications



C. diff Patient Care Areas — Disinfect

- ▶ Exam tables
- ▶ Handles/Doorknobs
- ▶ Light switches
- ▶ Counter tops
- ▶ Sinks



Isolation Rooms — Disinfect

- ▶ Bed frames
- ▶ Handles/doorknobs
- ▶ Light switches
- ▶ Counter tops/tray tables
- ▶ Sinks



Frequently Touched Surfaces — Disinfect

- ▶ Light switches
- ▶ Door knobs/crashbars
- ▶ Handrails
- ▶ Cabinet handles



Emergency Rooms — Disinfect

- ▶ Exam tables
- ▶ Medical equipment*
(high-touch areas)
- ▶ Handles/doorknobs
- ▶ Light switches Counter tops



Restrooms (public and patient) — Disinfect

- ▶ Sinks
- ▶ Toilets
- ▶ Handles/Doorknobs
- ▶ Light Switches

*For use on electronic components, refer to manufacturer's instructions before use.

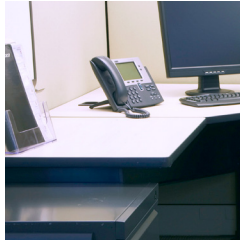


Surface Compatibility

This product is safe for use on these surface materials.*



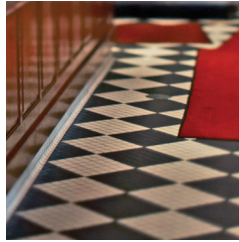
Chrome



Formica®



Glass



Linoleum



Plastic



Glazed Porcelain



Synthetic marble



Stainless Steel



Vinyl



Enamel



Fiberglass



Glazed Ceramic



Laminated surfaces



Marlite®



Plexiglas®



Porcelain Enamel

Not recommended for use on Aluminum, Brass, Fabric, Copper, Finished wood, Natural marble, Painted surfaces, Paper surfaces Rubber and Silver.

PRO TIP

If you're unsure about compatibility with a certain surface, contact the manufacturer or test it on the surface in an inconspicuous area prior to using it more widely. To prevent residue build up and further reduce the risk of potential surface damage, wipe periodically with a clean damp cloth to remove residue and excess disinfectant.

* Compatibility with equipment and surfaces will vary based on the components and material coatings. Check with the manufacturer for guidance on approved products for disinfection.

Corian® is a registered trademark of E. I. du Pont de Nemours and Company

Formica® is a registered trademark of The Diller Corporation

Marlite® is a registered trademark of Marlite, Inc.

Plexiglas® is a registered trademark of Arkema, Inc.

Clorox Healthcare® Bleach Germicidal Disinfectant
128 oz. Refill, Item No.: 68978



HEALTHCARE™

Use products as directed. Clorox Healthcare recommendations. Your facility's protocol may vary.

© 2021 Clorox Professional Products Company.

NI-54217



Product Storage & Disposal

STORAGE

Do's



Secure bottle (container tightly closed)



Store in a dry, cool and well-ventilated place

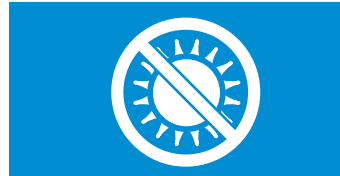


Store at or below eye level for safety precaution

Don'ts



Do not contaminate water, food, or feed



Keep out of direct sunlight and heat

DISPOSAL

Chemical

Do's



Dispose of at an approved waste disposal facility



Contact your local environmental, health or solid waste agency for proper disposal of the chemical

Don'ts



Pour it down the drain or toilet, on the ground, into storm sewers



Dispose with regular trash

Container

Do's



Recycle plastic container

Don'ts



Reuse or refill plastic container



HEALTHCARE™



Product Safety

Precaution for safe handling: Handle in accordance with good industrial hygiene and safety practice. Avoid contact with skin, eyes or clothing. Do not eat, drink or smoke when using this product.

Most important symptoms and effects: None known

First Aid:



Eye contact: may cause slight irritation

- ▶ Hold eye open and rinse gently with water for 15–20 min.
- ▶ If present, remove contact lenses after the first 5 min. of rinsing, then continue rinsing eye



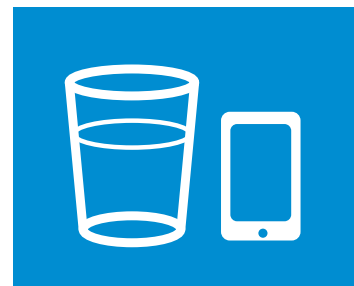
Skin contact: may cause slight irritation

- ▶ Wash with soap and water



Inhalation: may cause minor irritation to respiratory tract

- ▶ Move to a place with fresh air



Ingestion: may cause slight irritation to mucous membranes and gastrointestinal tract

- ▶ Drink a glassful of water and call a doctor

If irritation or other symptoms such as breathing problem persists, call the doctor.

Physical & Chemical Hazards: The product contains no substances which at their given concentration, are considered to be hazardous to health

National Fire Protection Association (NFPA) Ratings:

Health Hazard: 0
Flammability: 0
Instability: 0
Physical and Chemical Hazards: None

Hazardous Material Identification System (HMIS) Ratings:

Health Hazard: 0
Flammability: 0
Physical Hazard: 0
Personal Protection: A

Questions: Call (800) 234-7700

SDS: Much of this information and more can be found on the SDS. Make sure to have a printed product SDS within 10 min. of travel time, so it is easily accessible. Click [here](#) for a link to the product SDS.



HEALTHCARE™